

## RENTAL REVEALS

# Units in Karl Fischer's The Williamsburg Available From \$2,290

Friday, August 16, 2013, by Jeremiah Budin



Leasing at 373 Wythe Avenue, also known as **The Williamsburg** (because it's *in* Williamsburg), started today, with a mix of studios, one- and two-bedrooms ranging from **\$2,290 to \$3,950**. Last we heard, the leasing for the **11-story, 88-unit, Karl Fischer-designed** building was supposed to start back in May, but better late than never, and apparently, we weren't the only ones waiting around. Someone at Halstead, which is handling leasing and marketing, told *The Real Deal* that 700 people have put their names down on a waiting list. (Williamsburg, you see, is a very cool and desirable Brooklyn neighborhood, and the building The Williamsburg is located *inside* that neighborhood's borders.) The apartments feature stainless steel kitchen appliances, bamboo floors, insulated windows, and also exist in Williamsburg, which was named one of the top ten Brooklyn neighborhoods by *The L Magazine*.

WILLIAMSBURG

373 WYTHE AVENUE

KARL FISCHER

RENTAL REVEALS

THE WILLIAMSBURG

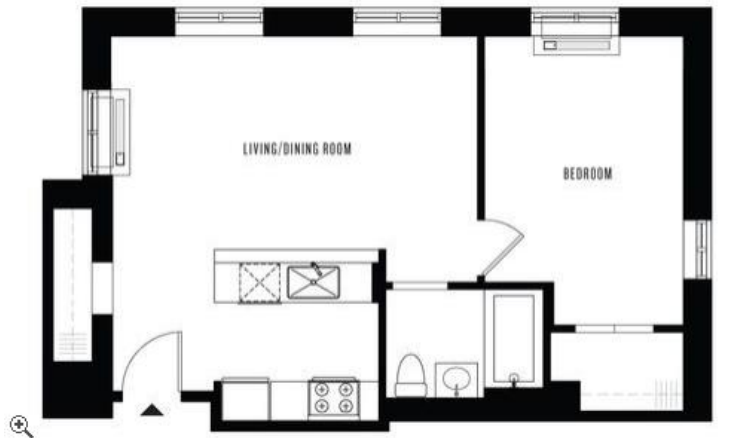
16 COMMENTS

Save

Like 4







- [The Williamsburg \[official\]](#)
- [The Williamsburg rentals hit the market: PHOTOS \[The Real Deal\]](#)
- [373 Wythe Avenue coverage \[Curbed\]](#)
- [More floorplans \[Streeteasy\]](#)